

ADINA'S CARDIGAN

STUFF

10 (11, 13, 15) skeins in #774 Adina of Craft by Vickie Howell/South West Trading Company, 1³/₄oz/50g skeins, each approx 137yd/125m (organic cotton/milk fiber)

One pair size 5 (3.75mm) needles OR SIZE TO GET THE GAUGE

Size E-4 (3.5mm) crochet hook

Five 7/8"/22mm buttons

Sized for Small, Medium, Large, X-Large. Shown in Medium on page 4.

THE MEASUREMENTS

Bust (closed) 36 (40, 44, 49)"/91.5 (101.5, 111.5, 124.5)cm

Length 18½ (19, 20½, 22)"/47 (48, 52, 56)cm

Upper arm 13 (14, 15, 16)"/33 (35.5, 38, 40.5)cm

THE GAUGE

22 sts and 32 rows to 4"/10cm over chart pat using size 5 (3.75mm) needles. BE SURE TO GET THE GAUGE.

MAKE THE BACK

■ Cast on 98 (110, 122, 134) sts. Work in St st for 6 rows.

Eyelet row (RS) K1, *yo, k2tog; rep from *, end k1. Beg with a p row, cont in St st for 5 rows, inc 1 st on last row—99 (111, 123, 135) sts.

beg chart pat

■ *Row 1 (RS)* Beg with st 4 and work to st 16, work 12-st rep 6 (7, 8, 9) times more, then work sts 17 to 30 once. Cont to foll chart as established, work next row even. Dec 1 st each side on next row, then every 8th row 4 times more—89 (101, 113, 125) sts. Work even until piece measures 6 (6, 6½, 7)"/15 (15, 16.5, 17.5)cm above eyelet row, end with a WS row. Inc 1 st each side on next row, then every 6th row 4 times more. Work even on 99 (111, 123, 135) sts until piece measures 10 (10, 11, 12)"/25.5 (25.5, 28, 30.5)cm above eyelet row, end with a WS row.

shape the armhole

■ Bind off 3 (4, 5, 6) sts at beg of next 2 rows, then 3 sts at beg of next 2 rows. Dec 1 st each side on next row, then every other row 1 (3, 5, 6) times more—83 (89, 95, 103) sts. Work even until armhole measures 7½ (8, 8½, 9)"/19 (20.5, 21.5, 23)cm, end with a WS row.

shape the shoulders and neck

■ Bind off 7 (7, 7, 8) sts at beg of next 2 rows, then 5 (6, 7, 8) sts at beg of next 6 rows. AT THE SAME TIME, bind off center 29 sts for neck. Working both sides at once, bind off from each neck edge 3 sts once, then 2 sts once.

MAKE THE LEFT FRONT

■ Cast on 44 (50, 56, 62) sts. Cont in St st for 6 rows.

Eyelet row (RS) K1, *yo, k2tog; rep from *, end k1. Beg with a p row, cont in St st for 5 rows, inc 1 st on last row—45 (51, 57, 63) sts.



beg chart pat

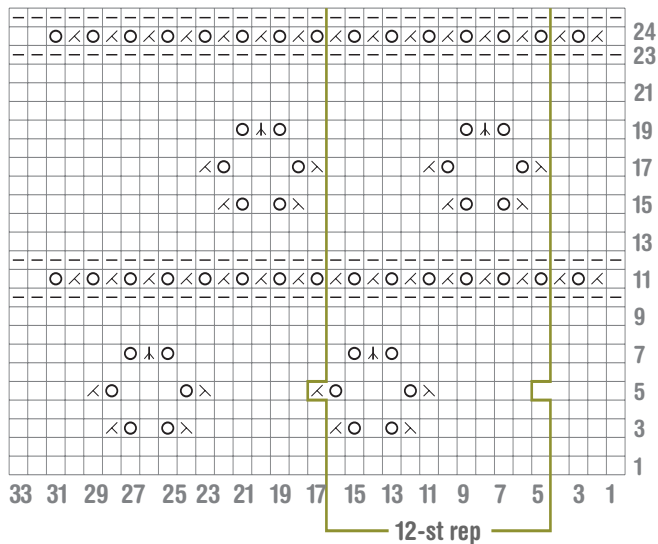
■ *Row 1 (RS)* Beg with st 1 (4, 1, 4) and work to st 16, work 12-st rep 1 (2, 2, 3) times more, then work sts 17 to 33 (30, 33, 30) once. Cont to foll chart as established, work next row even. Dec 1 st at beg of next row, then at same edge every 8th row 4 times more—40 (46, 52, 58) sts. Work even until piece measures 6 (6½, 7, 7½)"/15 (16.5, 17.5, 19)cm above eyelet row, end with a WS row. Inc 1 st at beg of next row, then at same edge every 6th row 4 times more. Work even on 45 (51, 57, 63) sts until piece measures same length as back to underarm, 10 (10, 11, 12)"/25.5 (25.5, 28, 30.5)cm above eyelet row, end with a WS row.

shape the armhole

■ Bind off 3 (4, 5, 6) sts at beg of next row, then 3 sts at same edge once, end with a WS row. Dec 1 st at armhole edge on next row, then at same edge every other row 1 (3, 5, 6) times more—37 (40, 43, 47) sts. Work even until armhole measures 6 (6½, 7, 7½)"/15 (16.5, 17.5, 19)cm, end with a RS row.

shape the neck

■ Bind off 5 sts at beg of next row, then 3 sts at same edge twice. Dec 1 st from neck edge every other row 4 times. AT THE SAME TIME, when piece measures same length as back to shoulder, end with a WS row. Shape shoulder at side edge as for back.



stitch key

- k on rs, p on ws
- p on rs, k on ws
- yo
- k2tog
- ssk
- s1 2 as if to k2tog, k1, pass 2 slipped sts over k1

MAKE THE RIGHT FRONT

■ Work as for left front, reversing all shaping.

MAKE THE SLEEVES

■ Cast on 68 (74, 80, 86) sts. Cont in St st for 6 rows.

Eyelet row (RS) K1, *yo, k2tog; rep from *, end k1. Beg with a p row, cont in St st for 5 rows, inc 1 st on last row—69 (75, 81, 87) sts.

beg chart pat

■ *Row 1 (RS)* Beg with st 1 (4, 1, 4) and work to st 16, work 12-st rep 3 (4, 4, 5) times more, then work sts 17 to 33 (30, 33, 30) once. Cont to foll chart as established, work next row even. Dec 1 st each side on next row, then every 8th row 4 times more. Work even on 59 (65, 71, 77) sts until piece measures 6"/15cm above eyelet row, end with a WS row. Inc 1 st each side on next row, then every 6th row 2 (2, 0, 0) times more, every 8th row 3 (3, 5, 5) times—71 (77, 83, 89) sts. Work even until piece measures 12 (12, 12½, 13)"/30.5 (30.5, 31.5, 33)cm above eyelet row, end with a WS row.

shape the cap

■ Bind off 3 (4, 5, 6) sts at beg of next 2 rows, then 3 sts at beg of next 2 rows. Dec 1 st each side on next row, then every other row 12 (13, 14, 15) times more. Bind off 3 sts at beg of next 6 rows. Bind off rem 15 (17, 19, 21) sts.

FINISH THE CARDIGAN

■ Block pieces to measurements. Sew shoulder seams.

make the right front band

■ With RS facing, pick up and k 83 (83, 89, 93) sts evenly spaced along right front edge from eyelet row to neck edge. *Row 1 (WS)* Knit. *Row 2* K1, *yo, k2tog; rep from * to end. *Row 3* Rep row 1. Bind off all sts purlwise.

make the left front band

■ With RS facing, pick up and k 83 (83, 89, 93) sts evenly spaced along left front from neck edge to eyelet row. Cont to work as for right front band.

MAKE THE COLLAR

■ Cast on 111 sts.

beg chart pat

■ *Row 1 (RS)* Beg with st 4 and work to st 16, work 12-st rep 7 times more, then work sts 17 to 30 once. Cont to foll chart as established, work next row even. Dec 1 st each side [every 4th row, then every other row] 4 times—95 sts. Work to row 24, then cont in St st until piece

measures 3½ (3½, 4, 4)"/9 (9, 10, 10)cm from beg, end with a WS row. Bind off.

trim the collar

■ With RS facing, pick up and k 111 sts along cast-on edge of collar. *Row 1 (WS)* K1, M1, k to last st, M1, k1—113 sts. *Row 2* K1, *yo, k2tog; rep from * to end. *Row 3* Rep row 1—115 sts. Bind off all sts purlwise. With RS facing, pick up and k 16 sts along LH edge of collar from cast-on edge to just row 1 of trim. *Row 1 (WS)* K1, M1, k to end—17 sts. *Row 2* K1, *yo, k2tog; rep from * to end. *Row 3* Rep row 1—18 sts. Bind off all sts purlwise. With RS facing, pick up and k 16 sts along RH edge of collar from just below row 1 of trim to cast-on edge. *Row 1 (WS)* K to last st, M1, k1—17 sts. *Row 2* K1, *yo, k2tog; rep from * to end. *Row 3* Rep row 1—18 sts. Bind off all sts purlwise. Sew corners of trim tog. Sew collar to neck edge. Set in sleeves. Sew side and sleeve seams. Fold each hem to WS along eyelet row and sew in place. Place markers for 5 button loops along right front edge, with the first 3"/7.5cm above eyelet row, the last ½"/1.5cm below neck edge and the others evenly spaced between.

make the buttonloops

■ With RS facing and crochet hook, join yarn with a sl st ½"/1.5cm below first button loop marker, ch 6, join ch with a sl st ½"/1.5cm above marker. Fasten off. Rep for 4 rem button loops. Sew on buttons. 🌐

